

A B C

Activity  
Book!

Print - Laminate - Play Again and Again



A



AIRPLANE

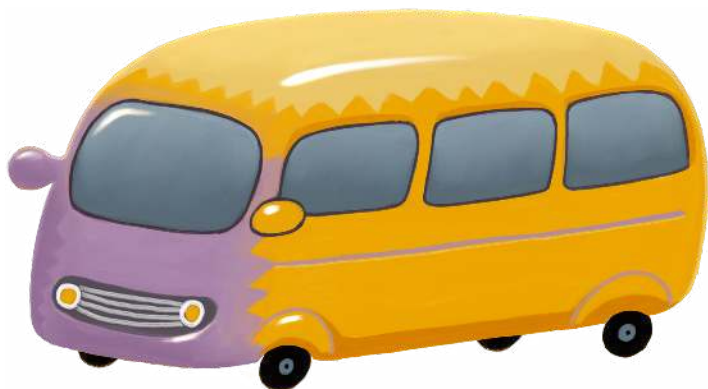
A A A A A

A A A A A

o o o o o

o o o o o

B



BUS

B B B B B

B B B B B

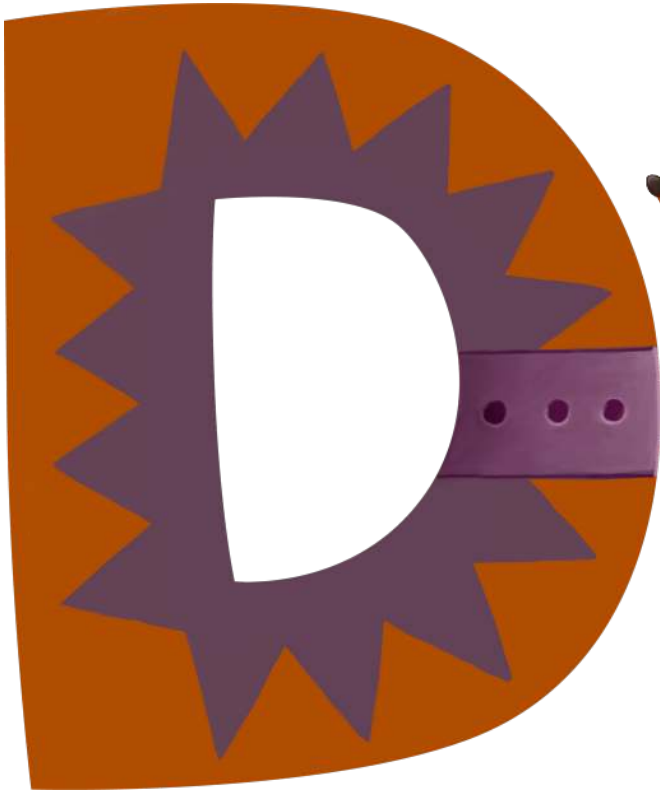
b b b b b

b b b b b



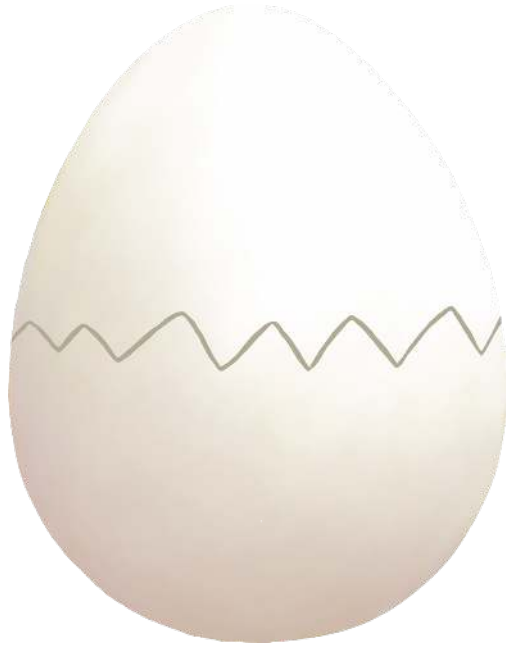
CAR

Handwriting practice section with four rows of lines. Each row contains five dotted lowercase 'c' characters for tracing. The first two rows have a dashed midline, while the last two rows have a solid midline.

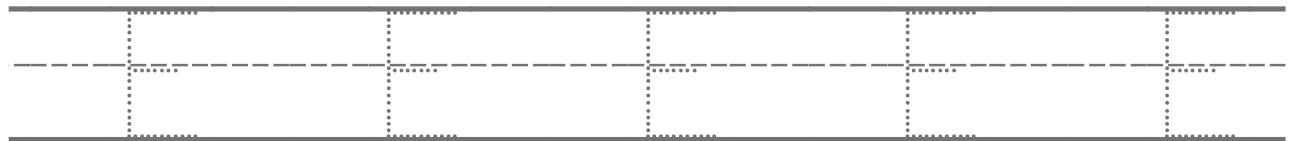
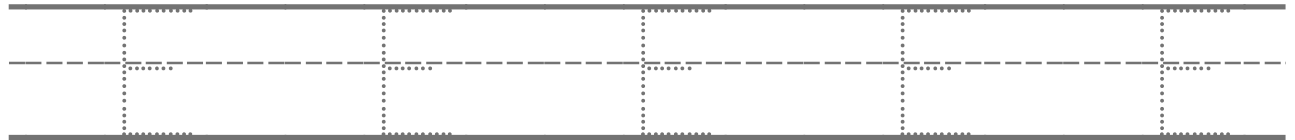


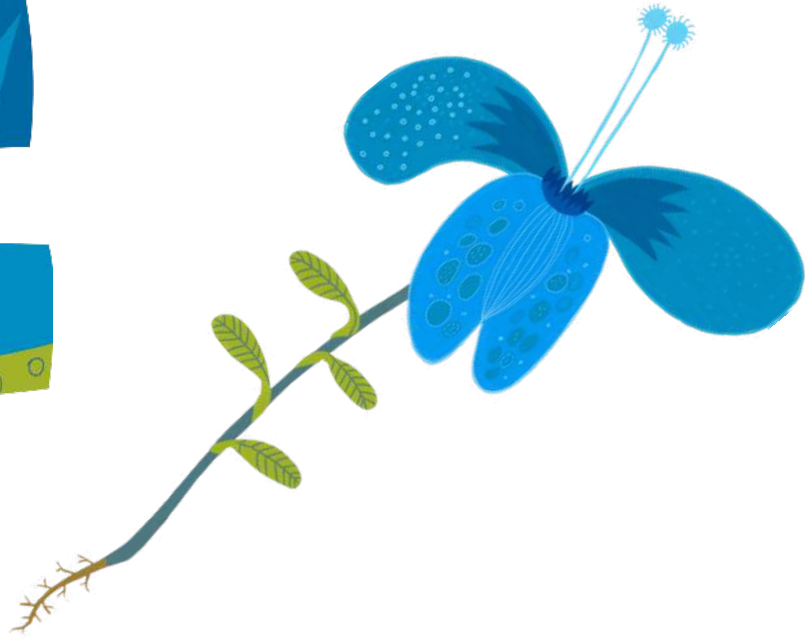
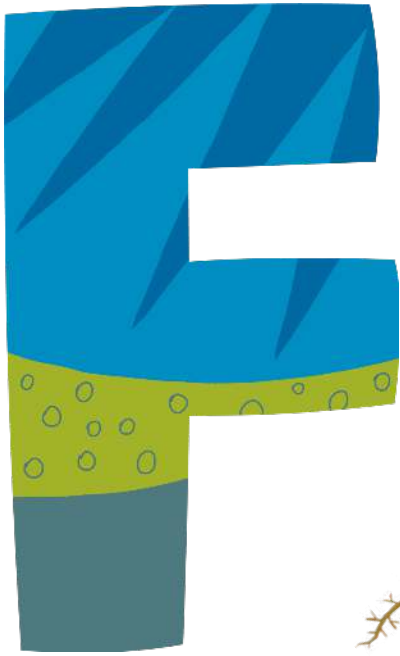
DOG

Handwriting practice section containing six rows of guided lines (top, middle dashed, bottom) for tracing the letter 'D'. The first two rows are for uppercase 'D', and the last two rows are for lowercase 'd'. Each row contains five dotted letters for tracing.



E G G





FLOWER

F F F F F

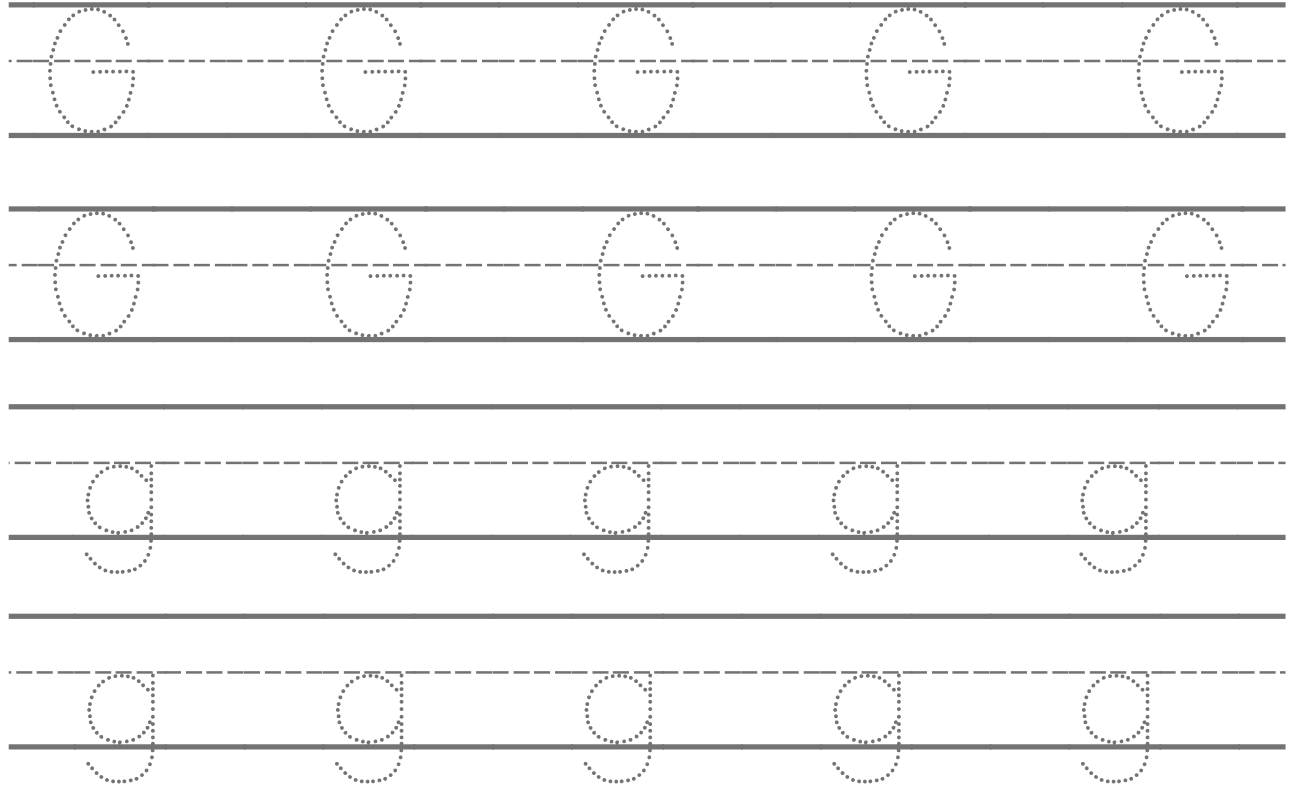
F F F F F

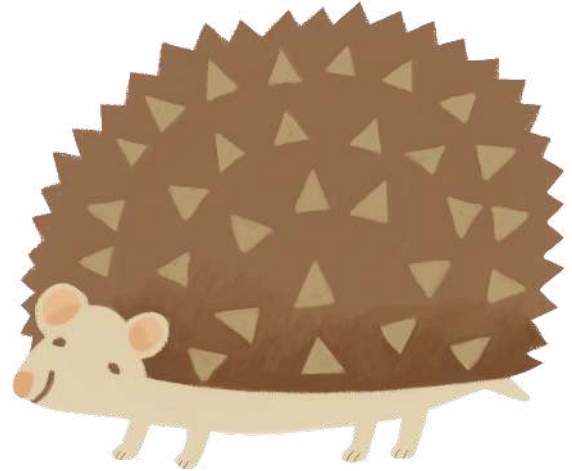
f f f f f

f f f f f



GIRAFFE





HEDGE HOG

H	H	H	H	H
h	h	h	h	h
h	h	h	h	h



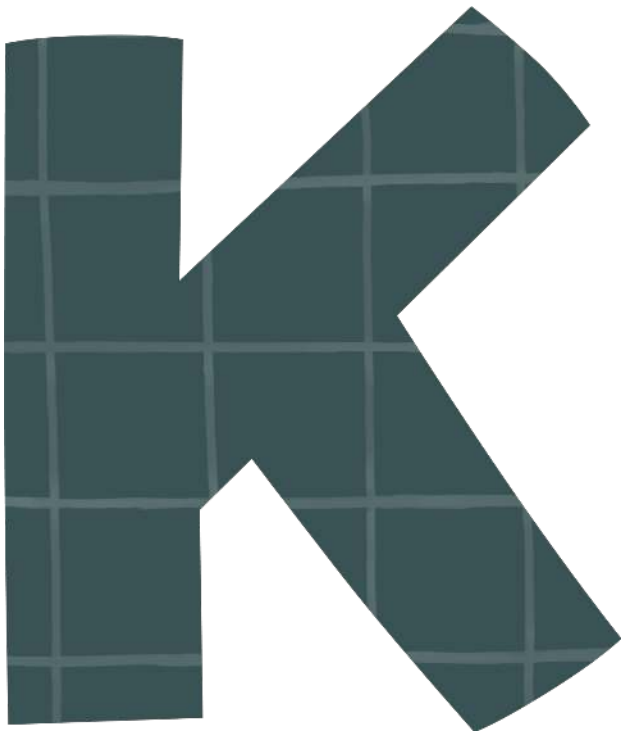
ICE CREAM

Handwriting practice area with four rows of lines. The first two rows are for uppercase 'I' tracing, and the last two rows are for lowercase 'i' tracing. Each row consists of a solid top line, a dashed middle line, and a solid bottom line. The first row contains five dotted uppercase 'I's for tracing. The second row contains five dotted lowercase 'i's for tracing. The third row contains five dotted uppercase 'I's for tracing. The fourth row contains five dotted lowercase 'i's for tracing.



JAR

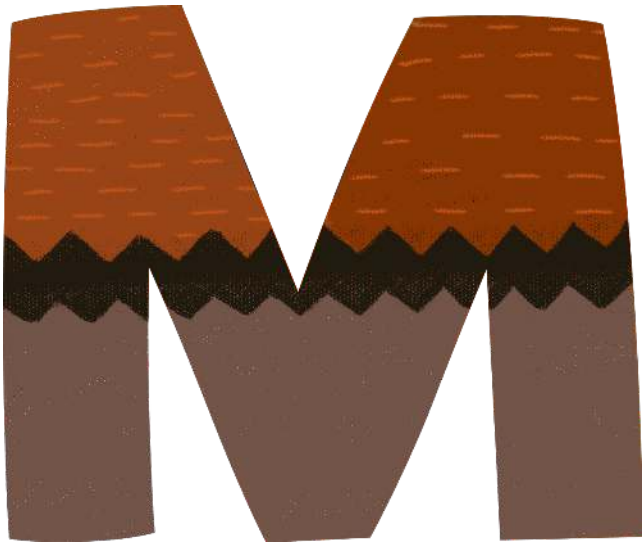
Tracing practice area for the letter 'J'. It consists of four rows of handwriting lines (top solid, middle dashed, bottom solid). The first two rows contain five uppercase 'J's each, and the last two rows contain five lowercase 'j's each. All letters are dotted for tracing.



KETTLE

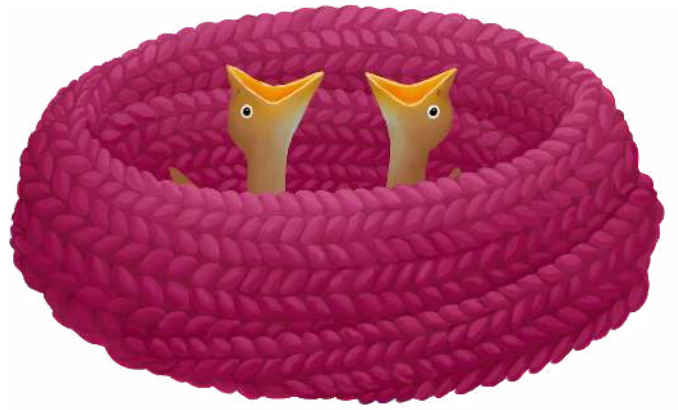
Handwriting practice section containing four rows of dashed uppercase 'K' letters on a three-line grid for tracing.





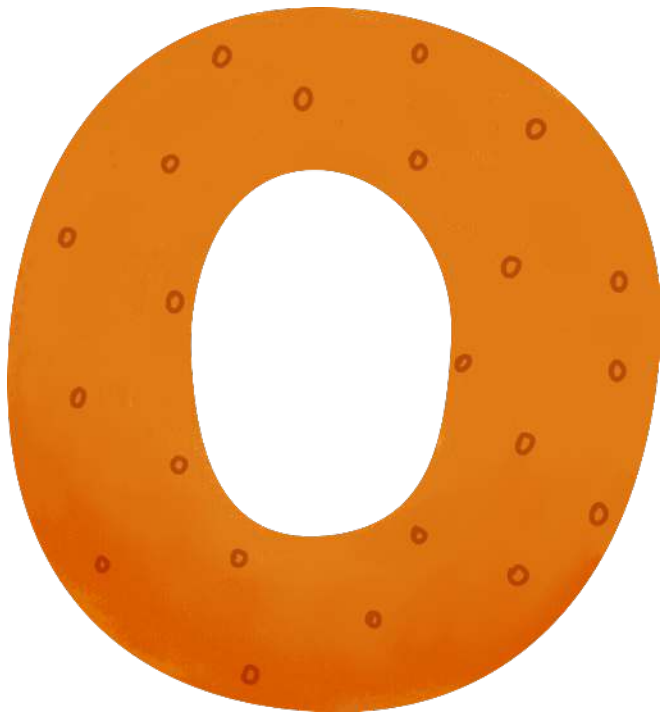
MUSTACHE

A large rectangular box containing four rows of handwriting practice lines. Each row consists of a solid top line, a dashed middle line, and a solid bottom line. The first two rows contain four dotted uppercase 'M' characters for tracing. The last two rows contain four dotted lowercase 'm' characters for tracing.



NEST

Tracing practice area for the letter 'N'. It contains three rows of handwriting lines (top, middle dashed, bottom). The first row has five dotted uppercase 'N's for tracing. The second row has five dotted uppercase 'N's for tracing. The third row has five dotted lowercase 'n's for tracing. The fourth row has five dotted lowercase 'n's for tracing.



ORANGE

Handwriting practice area for the letter 'O'. It consists of four rows of horizontal lines (top, middle dashed, bottom). The first two rows each contain five dotted uppercase 'O's for tracing. The third row contains five dotted lowercase 'o's for tracing. The fourth row contains five dotted lowercase 'o's for tracing.



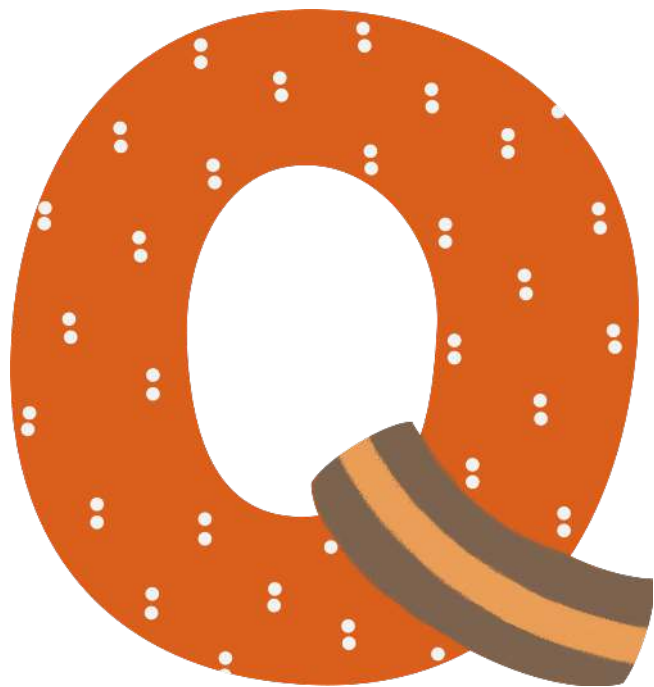
PIGEON

P P P P P

P P P P P

p p p p p

p p p p p



QUEEN

Tracing practice area for the letter Q. It consists of four rows of handwriting lines (top solid, middle dashed, bottom solid). The first two rows contain five dotted uppercase 'Q's each. The last two rows contain five dotted lowercase 'q's each.



RAISINS

R R R R R

R R R R R

r r r r r

r r r r r



SKIRT

S

S

S

S

S

S

S

S

S

S

s

s

s

s

s

s

s

s

s

s



A handwriting practice section consisting of four rows of lines. Each row has a solid top line, a dashed middle line, and a solid bottom line. The first two rows contain five vertical dashed lines each, spaced evenly across the width of the row. The last two rows contain five cross-shaped dashed lines each, also spaced evenly across the width of the row.



UMBRELLA

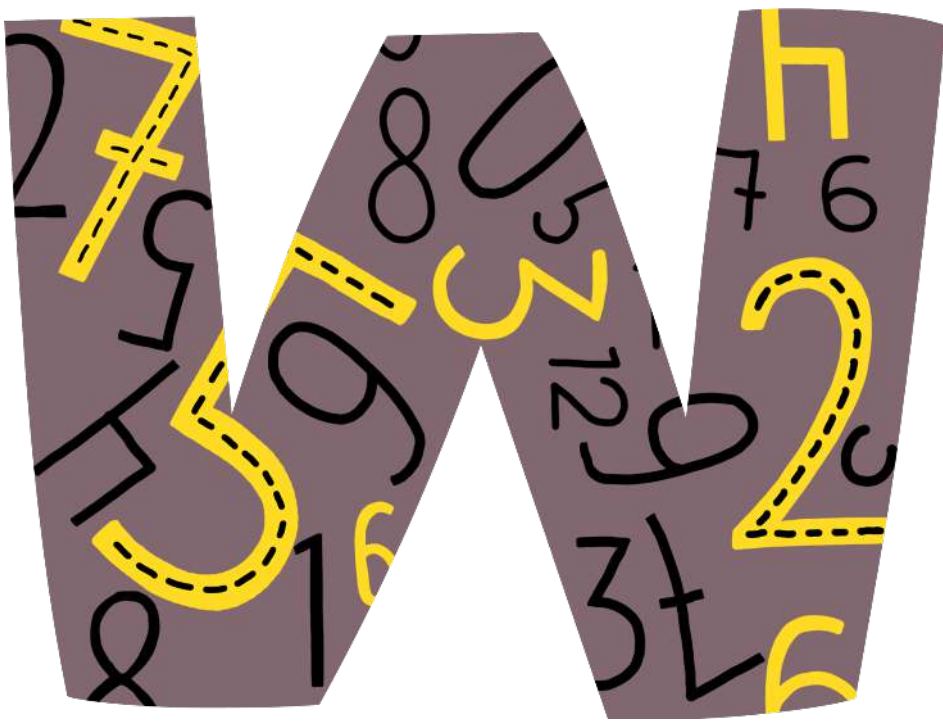
Handwriting practice section containing four rows of lines. Each row consists of a solid top line, a dashed middle line, and a solid bottom line. The first row contains five dotted uppercase 'U's for tracing. The second row contains five dotted lowercase 'u's for tracing. The third row contains five dotted uppercase 'U's for tracing. The fourth row contains five dotted lowercase 'u's for tracing.

V



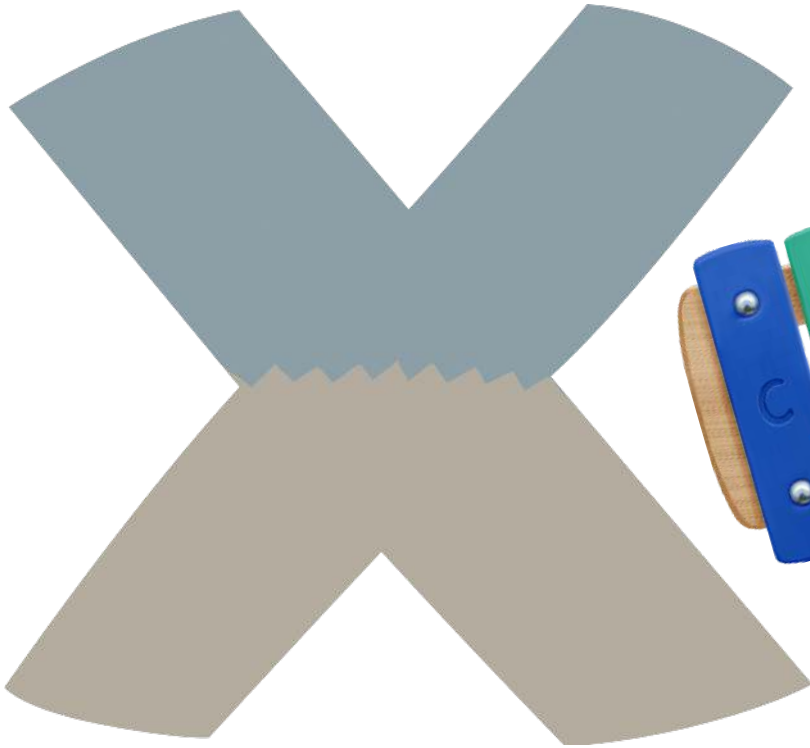
VEGETABLES

Tracing practice area for the letter V. It consists of four rows of handwriting lines. Each row has a solid top line, a dashed middle line, and a solid bottom line. The first two rows each contain five dotted uppercase 'V's for tracing. The third row contains five dotted lowercase 'v's for tracing. The fourth row contains five dotted uppercase 'V's for tracing.



WATCH

Tracing practice area with four rows of handwriting lines. Each row consists of a solid top line, a dashed middle line, and a solid bottom line. The first row contains four dotted lowercase 'w's for tracing. The second row contains four dotted lowercase 'w's for tracing. The third row contains four dotted lowercase 'w's for tracing. The fourth row contains four dotted lowercase 'w's for tracing.



XYLOPHONE

Handwriting practice area with four rows of lines. Each row consists of a solid top line, a dashed middle line, and a solid bottom line. The first two rows contain five dashed 'X' characters for tracing. The last two rows are empty for independent practice.



YACHT

Handwriting practice section containing four rows of lines. Each row consists of a solid top line, a dashed middle line, and a solid bottom line. The first two rows each contain five dotted uppercase 'Y' characters for tracing. The third row contains five dotted lowercase 'y' characters for tracing. The fourth row contains five dotted lowercase 'y' characters for tracing.



ZEBRA

Handwriting practice area containing four rows of lines. Each row consists of a solid top line, a dashed middle line, and a solid bottom line. The first two rows each contain five dashed slanted lines for tracing. The last two rows are empty for independent practice.